

Quotation No : TM 23110174

Date : 02.11.2023

1. PROCESS CONDITIONS

Application	: Sludge Dewatering
Model	: DDE 3542 G-15-01-02-01
Capacity (m³/h)	: 10
Inlet DS (%)	: 8
Product Feed Temperature (°C)	: Up To 70 °c

Special Conditions

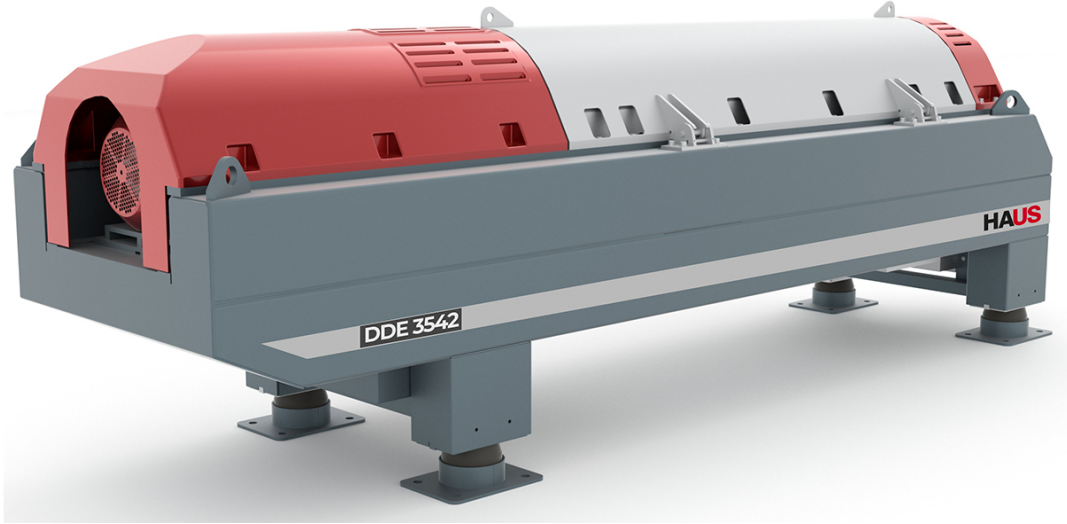
- *Cake dryness change depending on the structure of the product to be fed to the decanter.
- It is assumed that sludge which will be fed to decanter is not corrosive and aggressive.
- Motors: RAL 5010 color and included routine tests.

Quotation No : TM 23110174

Date : 02.11.2023

3. TECHNICAL SPECIFICATIONS

3-1. DDE 3542 G-15-01-02-01 DECANTER



Bowl Diameter (mm)	: 353
Length / Diameter Ratio (L/D)	: 4,14
Maximum Bowl Speed (rpm)	: 4200
G-Force (G)	: 3460
Width-Length-Height (mm)	: 890*3590*1090
Weight (kg)	: 1650
Conical Bowl Angle (°)	: 15
Lubrication	: Automatic
Materials	
Bowl	: 1.4470 (DUPLEX)
Scroll Body	: DUPLEX(1.4470)
Scroll Flights	: DUPLEX (1.4470)
Scroll Flight Wear Protection	: Tungsten Carbide Powder Coated Scroll Up To Solid Outlet
Bowl Outlet Bushes	: Hard Casting Steel

Quotation No : TM 23110174

Date : 02.11.2023

Frame and Feet : St 37 (EPOXY PAINTED)
Scroll Product Inlet Zone : Tungsten Carbide Coated Plate
Casing Material : DUPLEX (1.4470)
Product Inlet Pipe Material : DUPLEX (1.4470)

Motors

Main Motor Brand : ABB
Power (kW) : 18,5
Speed (rpm) : 3000
Protection Class : IP55
Efficiency Class : IE3
Scroll Motor Brand : ABB
Scroll Motor Output Power (kW) : 7,5
Scroll Motor Speed (rpm) : 3000
Scroll Motor Protection Class : IP55
Scroll Motor Energy Class : IE3

Sensor

Vibration Sensor : IFM / VKV021
Temperature Sensor : ORDEL / OR08-BIH06-3
Speed Sensor : SICK / IME18-08BPSZC0S

Working Principle

Ambient Temperature : -20 / +40 °c
Altitude Above Sea Level : 1316-1335 m
Note : It should not be exposed to direct sunlight.

Quotation No : TM 23110174

Date : 02.11.2023

4. TECHNICAL SPECIFICATIONS

4-1. CONTROL PANEL - DECANTER - PLC - 22-7.5



PLC Brand Model	: Siemens S7 1200
Touch Screen Brand and Model	: Siemens Ktp700 Basic 7" Hmi
Protection Class	: IP54
Panel Type	: Free Standing Type
Panel Material	: Sheet metal , Painted Ral 7035
Main Supply Voltage (V)	: 400VAC
Frequency (Hz)	: 50 Hz
Cable Entries	: Bottom
Frequency Inverter Brand	: Danfoss FC302
Panel Communication Protocol	: Profinet , Modbus TCP/IP
Working Conditions	
Temperature	: 5 - 40 °c
Relative Humidity	: 5 to 85%, in presence of corrosive gases 60%
Voltage Tolerance	: ± 5 % (relative to mains voltage)
Frequency Tolerance	: ± 2 % (relative to main frequency)

Quotation No : TM 23110174

Date : 02.11.2023

6. OFFER PRICE SUMMARY

Item	Description	Unit	Unit Price ^{EUR}	Total Price ^{EUR}
1	DDE 3542 G-15-01-02-01 DECANTER	1 Pc.		
2	CONTROL PANEL - DECANTER - PLC - 22-7.5	1 Pc.		
3	353X_354X DECANTER SET OF TOOLS	1 Pc.		
4	SLIDE GATE&CENTRATE CHUTE	1 Pc.		
5	HPU 3000 POLYMER UNIT	1 Pc.		
6	POLYMER PUMP	2 Pc.		
7	SLUDGE PUMP	2 Pc.		
8	FLOWMETER (POLYMER)	1 Pc.		
9	FLOWMETER (SLUDGE)	1 Pc.		
10	PANEL DIFFERENCES	1 Pc.		
11	CONVEYOR	1 Pc.		

Total Price (Excl. Taxes)

Subject to the commercial conditions in the adjacent pages